

An rogha is fearr

FIREBIRD



ENVIROMAX

CONDENSING RANGE

**ENVIROMAX UNIQUELY DESIGNED
TO PROTECT THE ENVIRONMENT
AND REDUCE YOUR FUEL BILLS**

Out of this world...

*The Ultimate in High
Efficiency Condensing
Oil Boilers*



Working towards a greener planet

FIREBIRD ENVIROMAX RANGE

Company Profile

Firebird Boilers is one of Ireland's and UK's leading manufacturer of quality high efficient oil fired boilers. The company has built its reputation over many years for reliability and excellent levels of after sales service. The Firebird group of companies is dedicated to exceeding customer expectations through its attention to design, employment of state of the art technology, 180 highly skilled staff members and its continuous quality improvement programme.

▶ FACTORY



Over 10,000m² / 100,000sq ft in Baile Mhic Íre, Co. Chorcaí

▶ AUTOMATED EQUIPMENT



Trumpf



Robot welding



Assembly And Storage

THE BOILER

SEDBUK Band 'A' Boiler

The Enviromax Range of domestic oil fired boilers are highly efficient condensing boilers and are all independently certified to Sedbuk Band A. The incredible efficiency of the boiler enabled Firebird to lead the way by having the first registered Sedbuk Band A rated Condensing oil fired Combination boiler. The incredible efficiency of the condensing boiler is due to the development of a single boiler unit with its three unique heat exchanger units. This additional surface area aided by the unique patented baffle design, increases the amount of heat extracted from the combustion process and thus reduces the heat wasted to the atmosphere.

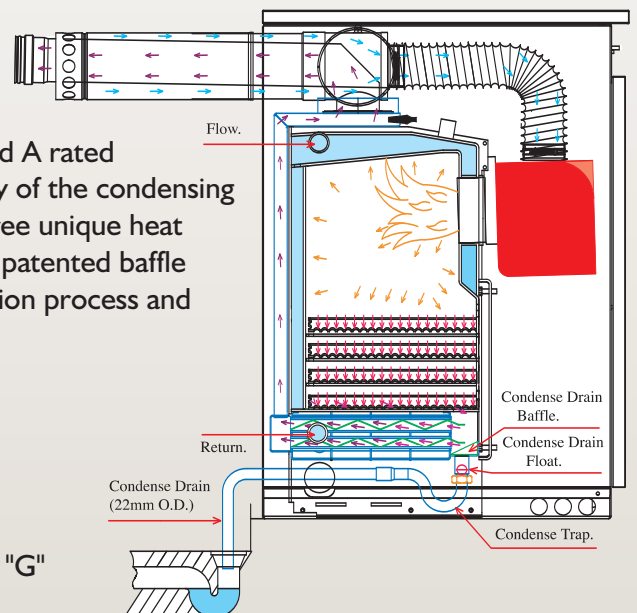
Condensate Pump available as an accessory.

SEDBUK Boiler Efficiency Data Base

As a simple guide to efficiency, a scheme has been created with SEDBUK - HARP efficiency bands assigned to boilers on an "A" to "G" scale.

The Real Benefits of Enviromax Condensing Boilers

To conclude, by choosing a Firebird Enviromax Condensing Boiler not only will you be making a contribution towards reducing global warming, but will dramatically increase the money in your pocket. Savings will vary according to the age of the boiler which is being replaced and could be as much as 10% to 30% per annum.



Band	SEDBUK range
A	90% and above
B	86% - 90%
C	82% - 86%
D	78% - 82%
E	74% - 78%
F	70% - 74%
G	below 70%

ENVIROMAX KITCHEN



SEDBUK BAND



ENVIROMAX FEATURES

- SEDBUK BAND A. PART L COMPLIANT.
- EASY CLEAN BAKED ON POLYESTER COATED CASING MAKES THE BOILER IDEAL CHOICE FOR EITHER THE KITCHEN OR UTILITY ROOM.
- HIGH BUILD QUALITY, FULL BASE AND RIGID CASING ASSEMBLY
- MODELS C20 - C35 845MM HIGH ALLOWS THE BOILERS TO BE FITTED UNDER WORK SURFACE AND PROVIDES FRONT SERVICING ACCESS.
- BOILER CONTROL THERMOSTAT.
- PUMP OVER RUN THERMOSTAT.
- SAFETY HIGH LIMIT THERMOSTAT.
- RIELLO RDB 2.2 & 4.2 BURNERS.
- MAINS ON AND LOCK OUT INDICATOR LIGHTS ON FRONT CASING. (KITCHEN MODEL ONLY)
- FULLY INSULATED AND ACOUSTICALLY DESIGNED FOR ULTRA QUIET OPERATION.
- 4 TAPPINGS , 2 FLOW AND RETURN EITHER SIDE, TOP AND BOTTOM MAKING RETROFIT EASIER

INDOOR MODEL RANGE

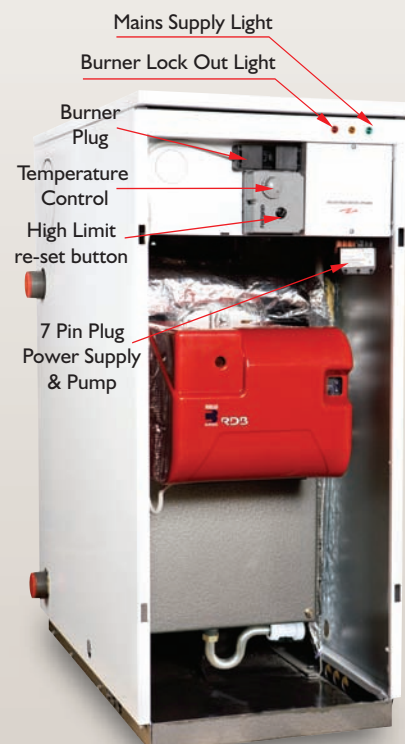
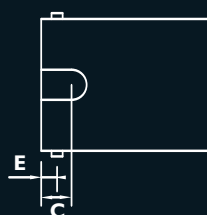
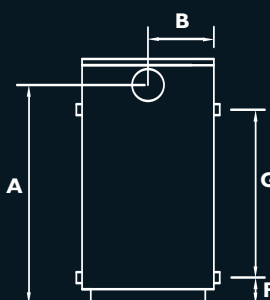
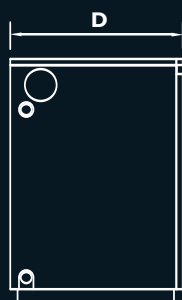
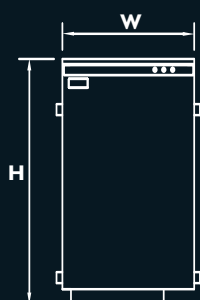
Model	Output	Weight	Dimensions(mm)								
Enviromax	Kw/hr	kg	H	W	D	A	B	C	E	F	G
Kitchen	C26	128	845	442	610	755	221	157	94	124	502
Kitchen	C35	131	845	442	610	755	221	157	94	124	502
Kitchen	C44	210	1046	464	852	914	232	154	100	125	620
Kitchen	C58	216	1046	464	852	914	232	154	100	125	620
Kitchen	C73	242	1196	524	852	1024	262	157	100	125	670

Front View

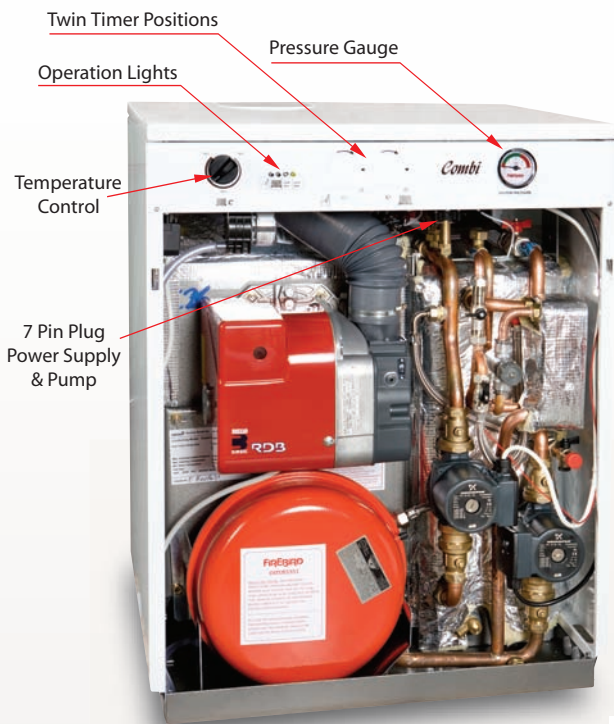
Side View

Rear View

Top View



ENVIROMAX COMBI



SEDBUK BAND



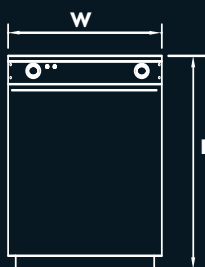
Enviromax Combi

A Firebird Enviromax Combi Boiler provides both your domestic hot water and central heating water in a single appliance. All Combi Boilers are fitted with a condensate pump. This space saving system saves you the cost and space associated with separate hot water tanks and the water tanks and piping needed in the roof space for other systems. However you should first ask your installer to measure your mains water supply and pressure, as well as your domestic hot water requirements to ensure they are suitable for the Firebird Enviromax Combi system.

INDOOR MODEL RANGE

Model	Output	Weight	Dimensions(mm)					
Enviromax	Kw/hr	kg	H	W	D	A	B	C
Combi	C26	176	845	670	605	750	220	155
Combi	C35	179	845	670	605	750	220	155

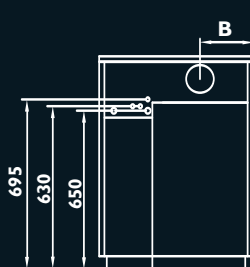
Front View



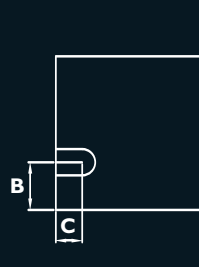
Side View



Rear View

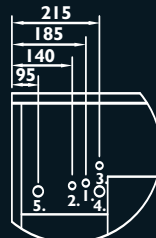


Top View



C.H. Flow & Return 22mm Copper
D.H.W. Mains Feed & Safety Valve 15mm Copper

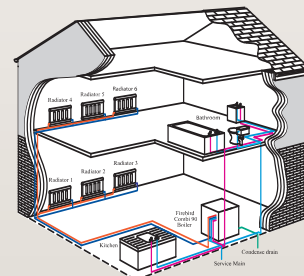
1. Mains Feed
2. D.H.W.
3. 3 bar Safety Valve
4. C.H. Flow
5. C.H. Return



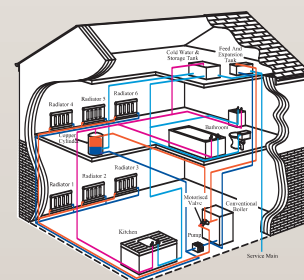
ENVIROMAX FEATURES

- SEDBUK BAND A. PART L COMPLIANT.
- EASY CLEAN BAKED ON POLYESTER COATED CASING MAKES THE BOILER IDEAL CHOICE FOR EITHER THE KITCHEN OR UTILITY ROOM.
- HIGH BUILD QUALITY.
- ALL COMBI BOILERS FIT UNDER STANDARD WORK SURFACE AND PROVIDES FRONT SERVICE ACCESS.
- UNIQUE ELECTRONIC FACILITY CONTROLS BOTH WATER TEMPERATURE AND D.H.W. FLOW USING ACCURATE THERMISTORS.
- RIELLO RDB 2.2 LOW NOX BURNER.
- FULLY INSULATED AND ACOUSTICALLY DESIGNED FOR ULTRA QUIET OPERATION.
- INSTANT MAINS PRESSURE HOT WATER AT THE TURN OF A TAP.
- RAPID RE-HEAT AFTER HOT WATER DRAW-OFF.
- SEALED SYSTEM INSTALLATION.
- NO TIME-WASTING ATTIC PIPEWORK.
- LOW PRESSURE SWITCH.
- TWIN GRUNDFOS PUMPS.
- INTEGRAL FILLING LOOP.
- ISOLATING VALVE FITTED TO MAINS FEED AND RETURN CONNECTIONS.
- OPTIONAL TIME PROGRAMMER.

HEATING SYSTEM



Firebird Combi System



Typical Conventional Boiler System

ENVIROMAX SYSTEM



SEDBUK BAND



Circulating Pump



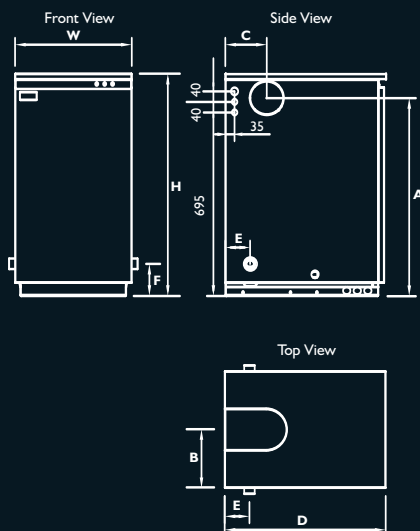
ENVIROMAX FEATURES

- SEDBUK BAND A. PART L COMPLIANT.
- EASY CLEAN BAKED ON POLYESTER COATED CASING MAKES THE BOILER IDEAL CHOICE FOR EITHER THE KITCHEN OR UTILITY ROOM.
- HIGH BUILD QUALITY.
- MODELS C20 - C35 845MM HIGH ALLOWS THE BOILERS TO BE FITTED UNDER WORK SURFACE AND PROVIDES FRONT SERVICING ACCESS.
- RIELLO RDB 2.2 LOW NOX BURNER.
- FULLY INSULATED AND ACOUSTICALLY DESIGNED FOR ULTRA QUIET OPERATION.
- RAPID RE-HEAT AFTER HOT WATER DRAW-OFF.
- LOW PRESSURE SWITCH.
- PUMP OVER RUN THERMOSTAT.
- BOILER WATER TEMPERATURE CONTROL AND HIGH LIMIT SAFETY THERMOSTAT.
- GRUNDFOS PUMPS.
- INTEGRAL FILLING LOOP.
- SYSTEM PRESSURE GAUGE.
- 12 LITRE PRESSURE VESSEL.

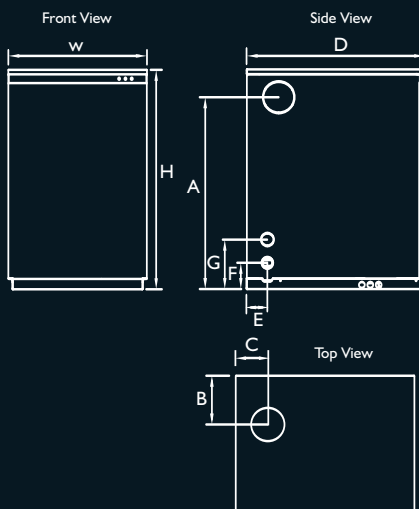
INDOOR MODEL RANGE

Model	Output	Weight	Dimensions(mm)								
Enviromax	Kw/hr	kg	H	W	D	A	B	C	E	F	G
System	C26	146	845	442	610	753	221	157	94	124	-
System	C35	149	845	442	610	753	221	157	94	124	-
System	C44	235	1046	660	852	914	232	157	100	125	236

System C20 - C35



System C44



ENVIROMAX HEAT PAC

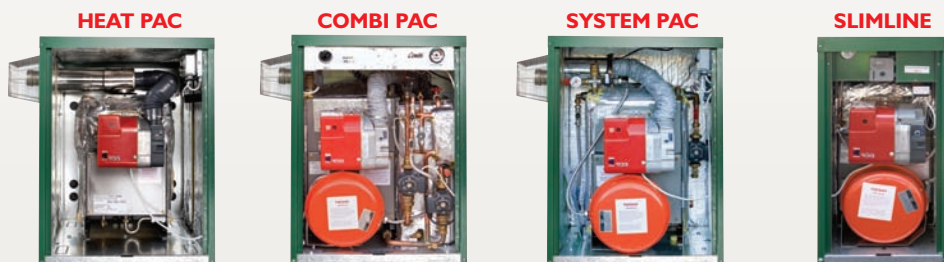


Temperature Control & High Limit re-set button

Burner Plug



The **Enviromax Heat Pac** Range is fully insulated with mineral wool insulation to prevent heat loss. There is sufficient space for fitting a circulating pump as required. The **Enviromax Heat Pac** Range eliminates any building and so reduces cost and labour. It comes with removable sides for easy access to any part of the unit. The piping may be carried out from the back or underneath. Ensure wiring is carried out to E.T.C.I. standards.

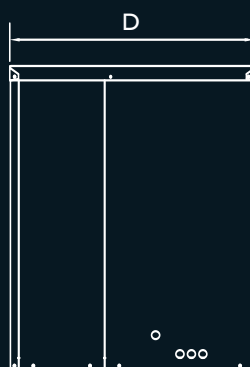


OUTDOOR RANGE - HEAT PAC, SLIMLINE, COMBI PAC & SYSTEM PAC

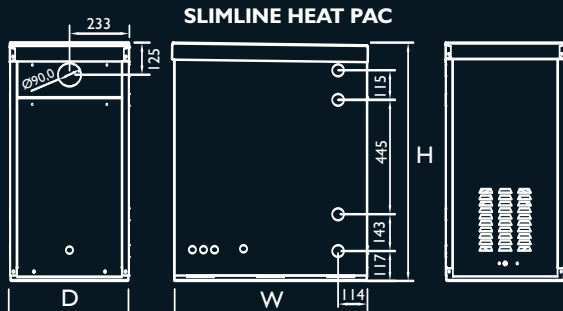
- SEDBUK BAND A. PART L COMPLIANT.
- HIGH QUALITY EXTERNAL PVC COATED OUTER CASING MAKES THE HEAT PAC RANGE IDEAL WHERE FLOOR AND WALL SPACE IS AT A PREMIUM INSIDE THE DWELLING.
- HIGH BUILD QUALITY.
- RIELLO RDB 2.2 & 4.2 BURNERS.
- BOTH OUTER CASING AND BOILER ARE FULLY INSULATED.
- CONDENSATE DRAIN WITH BUILT IN TRAP.
- ALL BOILER OPTIONS WITHIN THE HEAT PAC RANGE HAVE SIMILAR SPECIFICATION TO THE EQUIVALENT INDOOR MODEL. WITH THE ADDITION OF A BUILT IN FROST THERMOSTAT.
- MULTI DIRECTIONAL FLUE SYSTEM.
- STAINLESS STEEL TERMINAL GUARD.
- FROST THERMOSTAT FITTED TO ALL HEAT PAC MODELS.
- 4 TAPPINGS, 2 FLOW AND RETURN EITHER SIDE, TOP AND BOTTOM MAKING RETROFIT EASIER

Model	Output	Weight	Dimensions(mm)		
Enviromax	Kw/hr	kg	H	W	D
Slimline	C26	150	927	760	466
Slimline	C35	153	927	760	466
Heatpac	C26	154	945	715	625
Heatpac	C35	158	945	715	625
Heatpac	C44	244	1074	843	856
Heatpac	C58	250	1074	843	856
Heatpac	C73	280	1124	903	856
Systempac	C26	163	945	715	625
Systempac	C35	166	945	715	625
Systempac	C44	270	1074	843	856
Combipac	C26	206	945	715	625
Combipac	C35	209	945	715	625

COMBI, SYSTEM & HEAT PAC



SLIMLINE HEAT PAC



SLIMLINE HEAT PAC



ENVIROMAX POPULAR BOILERHOUSE MODEL



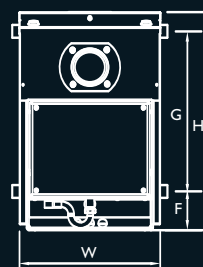
ENVIROMAX FEATURES

- SEDBUK BAND A. PART L COMPLIANT.
- IDEAL FOR INSTALLATION IN BOILERHOUSES / UTILITIES WHERE WHITE CASE MODELS ARE UNNECESSARY
- HIGH QUALITY PVC COATED CLOSE FITTED CASING
- HIGH BUILD QUALITY.
- RIELLO RDB 2.2 & 4.2 BURNERS.
- FULLY INSULATED.
- CONDENSATE DRAIN WITH BUILT IN TRAP.
- MULTI DIRECTIONAL FLUE SYSTEM.
- STAINLESS STEEL TERMINAL GUARD.
- 4 TAPPINGS , 2 FLOW AND RETURN EITHER SIDE, TOP AND BOTTOM MAKING RETROFIT EASIER

BOILERHOUSE RANGE

Model	Output Kw/hr	Weight kg (incl. Burner)	Dimensions(mm)									
			H	W	D	BURNER DEPTH	B	C	E	F	G	
Popular	C26	112	684	441	381	202	220	163	99	122	502	
Popular	C35	115	684	441	381	202	220	163	99	122	502	
Popular	C44	182	820	470	533	202	154	154	97	123	620	
Popular	C58	190	820	470	533	253	154	154	97	123	620	
Popular	C73	210	877	530	527	253	265	155	97	123	670	

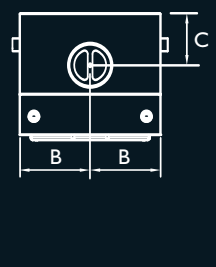
Front View



Side View



Top View



MULTI DIRECTIONAL FLUE SYSTEMS

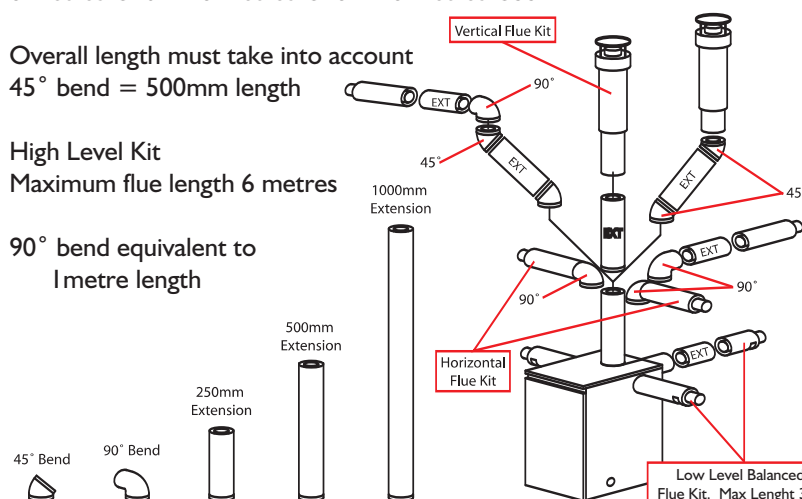
FIREBIRD ENVIROMAX FLUE SYSTEMS

Vertical Kit - Maximum flue length
6 metres C20 • 6 metres C26 • 6 metres C35

Overall length must take into account
45° bend = 500mm length

High Level Kit
Maximum flue length 6 metres

90° bend equivalent to
1 metre length



GUARANTEE

GUARANTEE

All Firebird Boilers have a comprehensive 2 year parts and labour Guarantee. Our distinctive heat exchanger is covered by a 5 year Guarantee. Subject to the boiler being installed to Firebird Instructions (Copy Supplied with every Boiler) All Firebird Enviromax Boilers must be commissioned, and on completion of the installation the Guarantee Registration Form Must be returned to Firebird within 30 days.

COMPLETE AFTER SALES SERVICE

Firebird has always provided our customers with the highest levels of after sales care. Our boilers are supported by a nationwide association of independent service engineers, who are regularly trained on our appliances.

FIREBIRD ENVIROMAX RANGE TECHNICAL INFORMATION

ENVIROMAX		Combi / Combi Pac		System / System Pac			Kitchen / Heat Pac / Popular			
Boiler Model		C26	C35	C26	C35	C44	C26	C35	C44/58	C73
Max Heat Output	Kw	20/26	35	20 / 26	35	44	20/26	35	44 / 58	73
	Btu/h ('000)	68/89	119	68 / 89	119	150	68/89	119	150 / 198	249
CONNECTIONS										
Heating Flow		22 mm	28 mm	22 mm	28 mm	1 1/2" Bsp.	1" Bsp.	1" Bsp.	1 1/2" Bsp.	1 1/2" Bsp.
Heating Return		22 mm	28 mm	1" Bsp.	1" Bsp.	1 1/2" Bsp.	1" Bsp.	1" Bsp.	1 1/2" Bsp.	1 1/2" Bsp.
Mains Cold Feed (Copper)		15 mm	15 mm	15 mm	15 mm	15 mm				
Hot Water Delivery (Copper)		15 mm	15 mm							
Drain Off Cock		1/2" Bsp.	1/2" Bsp.	1/2" Bsp.	1/2" Bsp.	1/2" Bsp.	1/2" Bsp.	1/2" Bsp.	1/2" Bsp.	1/2" Bsp.
Safety Pressure Relief valve outlet (Copper)		15 mm	15 mm	15 mm	15 mm	15 mm				
Condense Drain Off Connection.										
White Cased		3/4" Bsp. Female		3/4" Bsp. Female			3/4" Bsp. Female			
Heat Pac & Popular B.H.		22 mm PLASTIC		22 mm PLASTIC			22 mm PLASTIC			
Circulating Pump (Grundfos)		25/60	25/60	25/60	25/60	25/80				
Domestic Hot Water Plate Heat Exchanger		25plate	31plate							
Boiler integral Expansion Vessel Normal Capacity		12 litres	12 litres	12 litres	12 litres	18 litres				
		pre-charged to 1 bar.		pre-charged to 1 bar.						
WATER CONTENT										
Water Content Boiler		24	24	24	24	45	24	24	43.5	54
Water Content Primary Tank (Litres)		40	40							
D.H.W. GUIDE PERFORMANCE		C20/26	C35							
120 litre at 40°C Δt. Litres per minute		14 / 16	20							
FLUE (Indoor Boilers)		Concentric Flue	Concentric Flue	Concentric Flue	Concentric Flue	Concentric Flue	Concentric Flue	Concentric Flue	Concentric Flue	Concentric Flue
Balanced Flue Assembly (mm)		125 (5")	125 (5")	125 (5")	125 (5")	155 (6")	125 (5")	125 (5")	155 (6")	170 (7")
Conventional flue Socket. (mm)		130 id.	130 id.	130 id.	130 id.	155 id.	130 id.	130 id.	155 id.	170 id.
Flue Draught Reqd. (Min WG.)		0.040"	0.040"	0.040"	0.040"	0.040"	0.040"	0.040"	0.040"	0.040"
Conventional Flue (Max WG.)		0.15"	0.15"	0.15"	0.15"	0.15"	0.15"	0.15"	0.15"	0.15"
INTEGRAL FLUES ON HEAT PAC MODELS										
TEMPERATURE CONTROL										
Boiler Central Heating Control		60°C - 80°C +- 3°C		60°C - 80°C +- 3°C			60°C - 80°C +- 3°C			
Boiler Safety Limit		110°C +- 3°C		110°C +- 3°C			110°C +- 3°C			
Tank (DHW)- Fixed		78°C +- 3°C								
Early Alert - Fixed		87°C +- 3°C								
Over-run - Fixed		93°C +- 3°C		87°C +- 3°C			87°C +- 3°C (Heatpac & Kitchen only)			
FROST THERMOSTAT FITTED TO ALL HEAT PAC MODELS										
BOILER SAFETY LIMIT, FROST AND OVER-RUN THERMOSTATS FITTED ON ALL HEAT PAC MODELS										
HEATING SYSTEM (SEALED)										
Fit in accordance with BS 7074 Part 1, BS 5449, OFTEC Standards, etc										
Max. Operating Pressure		2.5 Bar		2.5 Bar						
Max. System Pressure cold		1.5 Bar		1.5 Bar						
Min. System Pressure cold		0.5 Bar + 0.3 Bar		0.5 Bar + 0.3 Bar						
Boiler Test Pressure		4.5 Bar		4.5 Bar			4.5 Bar			
Safety Valve Operating Pressure Gauge		0 to 4 Bar		0 to 4 Bar			0 to 4 Bar			
MAINS WATER SUPPLY										
Pressure										
Max										
Min										
Limescale excess: When over 150/200 ppm. Fit appropriate scale reducer. 10 bar max (Fit pressure reducing valve as necessary) 1 bar min. For user Comfort reduce pressure at tap to between 1 and 5 Bar.										
WATER SIDE RESISTANCE										
Flow Rate Measured (Kg h ⁻¹)										
Waterside Resistance (mbar)										
Flow Rate Measured (Kg h ⁻¹)										
Waterside Resistance (mbar)										
Pressure Jet Oil Burners										
Fuel										
Electrical Supply										

For further information on all Firebird products please contact:

FIREBIRD BOILERS

Baile Mhic Íre, Co. Chorcaí, Éire.

t: +353 (0)26 45253

f: +353 (0)26 45309

e: info@firebird.ie

w: www.firebird.ie



YOUR LOCAL STOCKIST